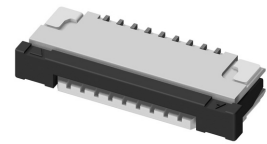


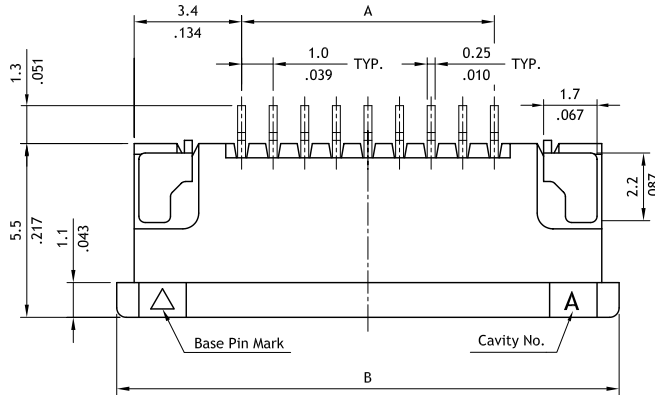
CF07 Series 1.00mm(.039") SMT ZIF FFC/FPC Downside Connectors

- Tin plated over copper alloy Downside contact
- Insulation: High temperature plastic UL 94V-0, Color Nature
- Slider: High temperature plastic UL 94V-0, Color Brown
- Actuator designed easy for FFC/FPC installation
- Fully check by CCD and Hi-Pot test
- With fixed metal tabs to secure connector in place
- Available in Tube or Reel packing

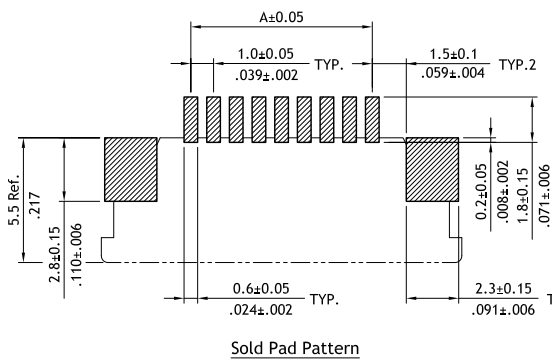
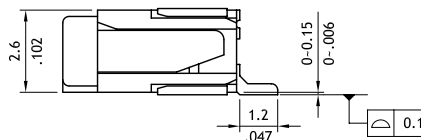
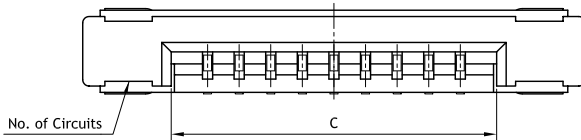
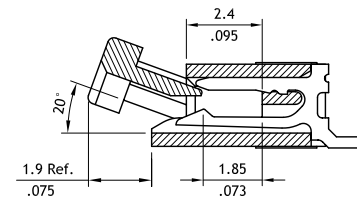


:E159616

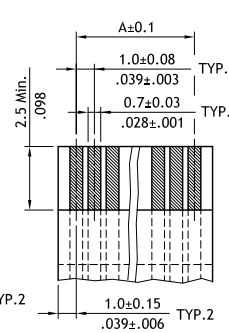
RoHS Compliant



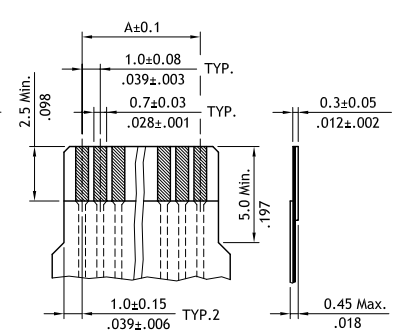
A = 1.00 * No. of Spaces
 B = A + 8.0
 C = A + 2.3



Sold Pad Pattern



Accommodated FFC



Accommodated FPC

Ordering Code

1 **2** **3** **4** **5** **6** **7**
CF07 32 1 D 0 R 0

- 1** Series No.
- 2** Circuits : 04~32
- 3** Plating code:
1= Tin over Nickel

- 4** Contact style:
D= Downside contact
- 5** Color: 0= Nature

- 6** Packing options:
R= Tape & Reel
T= Tube Packing
- 7** Other options:
0= Standard
* Special option Consult manufacturer